

SORDO-P

Sound attenuator with centre body for circular ducts



QUICK FACTS

- Excellent noise attenuation
- The round centre body means that the product is very well suited to axial fans
- Mineral wool covered with special polyester fabric and perforated sheet steel
- Air tightness class C
- Available in the sizes 500-1600 mm

Technical description

General features

SORDO P is a circular sound attenuator with an aerodynamically designed centre body (pod) for circular connection spigots with 100 mm insulation, covered with EUROLON and perforated sheet steel.

Version

SORDO-P is fitted with an acoustic centre body for extremely good sound attenuation.

The product satisfies air tightness class C.

The SORDO-P conforms to Fire-resistance Class E60.

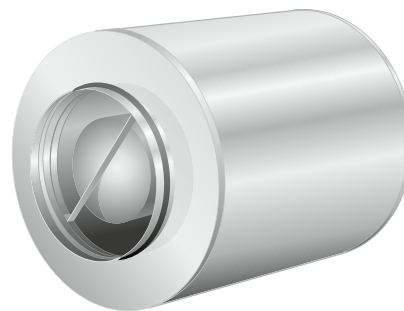


Figure 1. SORDO-P

Material and surface layer

- Made of galvanised sheet steel to environmental class C3 (equivalent to M2 as per VVS-AMA 98)
- Sound attenuating materials: 100 mm thick mineral wool.
The insulation is covered with EUROLON. The sound attenuating material is also covered with perforated sheet steel outside the EUROLON layer.
- The connection spigots are fitted with rubber seals

Installation and maintenance

See separate installation instructions

Environment

The relevant building product declaration is available from our website.

Sizing

Sound attenuation

Sound attenuation is specified to ISO 7235, i.e. static integral attenuation for duct products.

Table 1.

Size	Length (mm)	Ø d (mm)	Ø D (mm)	Static integral attenuation, dB to ISO 7235								Weight
				63	125	250	500	1 K	2 K	4 K	8 K	
500	900	499	700	2	5	12	22	33	27	17	15	50.5
	1200	499	700	3	6	15	28	41	30	19	17	60.5
630	900	629	830	2	4	11	19	25	19	12	8	58
	1200	629	830	3	5	14	25	33	22	14	10	77
800	900	799	1000	1	3	9	17	21	15	9	6	69
	1600	799	1000	2	4	12	22	29	18	11	8	84
1000	1000	999	1200	1	3	9	17	20	15	9	6	96
	2000	999	1200	3	7	17	27	36	29	17	13	173
1250	1200	1249	1450	1	3	9	17	20	12	7	4	150
	2400	1249	1450	3	8	18	27	33	25	14	11	260
1600	1600	1599	1800	2	4	10	17	20	22	6	3	230
	3200	1599	1800	3	8	17	26	32	22	11	9	425

Pressure drop

The pressure drop that SORDO-P duct-to-duct installation generates is specified in Diagram 1.

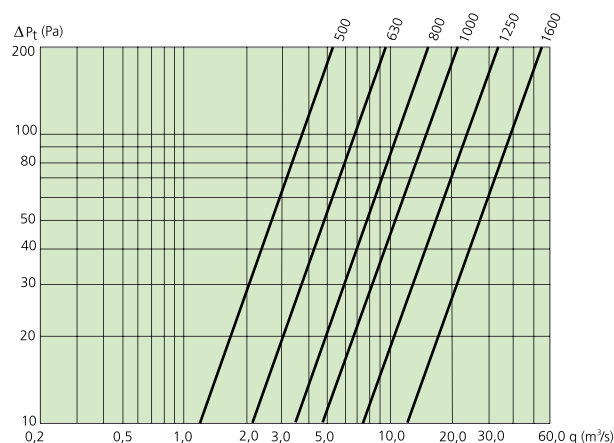
The specified data is based on a uniform air stream in and out of the product. Any dampers, duct bends or other products in the ducting near the sound attenuator will increase its pressure drop and level of flow-generated sound, and will affect its sound attenuating properties.

Software

You can find the sizing software easily on www.swegon.com.

Swegon plugin for MagiCAD for AutoCAD and Revit means that you can choose a duct section from the drawings and automatically search for suitable sound attenuator options for the duct based on the duct form, dimensions, air flow and MagiCAD sound data.

Diagram 1. Pressure drop – Air flow (Pa/m)



Dimensions

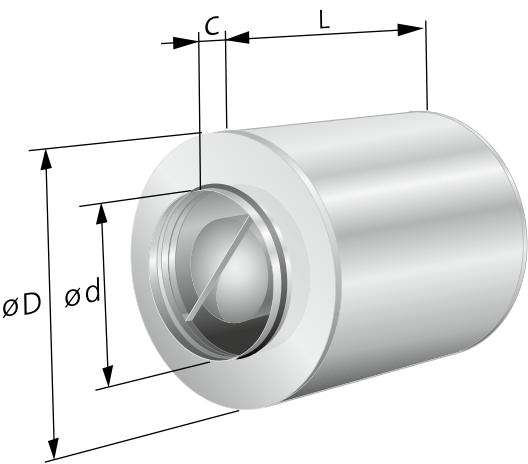


Figure 2. Dimension sketch

Size mm	Ø d mm	Ø D mm	C mm	Length mm	
500	499	700	60	900	1200
630	629	830	60	900	1200
800	799	1000	60	900	1600
1000	999	1200	60	1000	2000
1250	1249	1450	60	1200	2400
1600	1599	1800	60	1600	3200

Specification

Product

Circular sound attenuator with centre body (pod)

SORDO-P	bbbb-	cccc
Connection dimensions: 500, 630, 800, 1000, 1250, 1600		
Length: (dim. 500+630) 900, 1200 (dim. 800) 900, 1600 (dim. 1000) 1000, 2000 (dim. 1250) 1200, 2400 (dim. 1600) 1600, 3200		

Specification text

Example of a specification text as per VVS AMA 12.
QKB.1 Straight sound attenuator with circular connection spigots

Example 1

Swegon type SORDO-P round sound attenuators for connection to circular ducts, with the following functions:

- Fitted with aerodynamic centre body (pod)
- 100 mm thick mineral wool covered with EUROLON and perforated sheet steel
- Air tightness class C
- Corresponds to fire-resistance class E60

Designation:	SORDO-P 630-1200	xx pcs
--------------	------------------	--------